



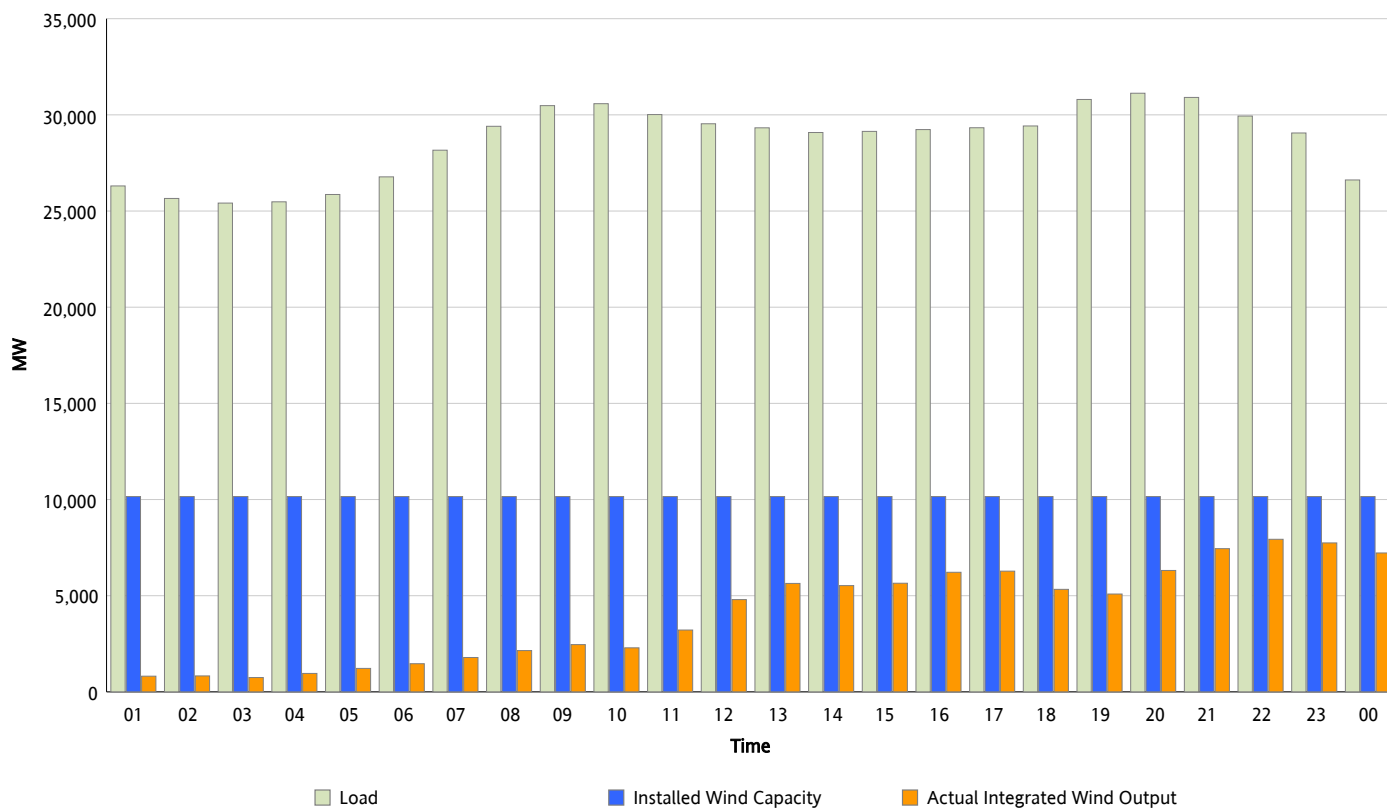
ERCOT Grid Operations

Wind Integration Report : 02/03/2013

Peak Load	31,124 MW
Load Peak Hour (HE)	20
Wind Over Peak	6,312 MW
Wind Record 01/29/13	8,667 MW
Max Wind Value*	8,037 MW
Wind Peak Time	22:10
Wind Integration %	27.02 %

Hourly Average Actual Load vs. Actual Wind Output

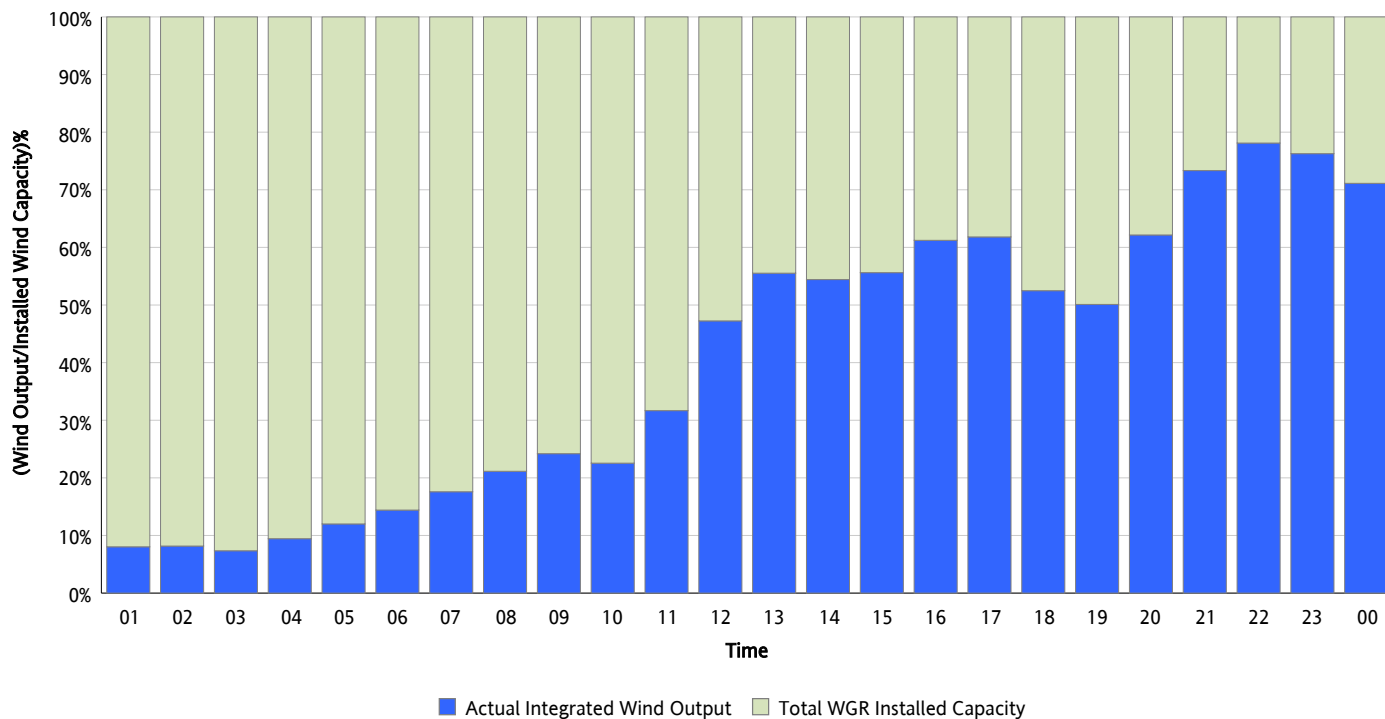
02/03/2013



* Wind Record and Wind Max represent instantaneous values and the rest of the values are integrated over the hour

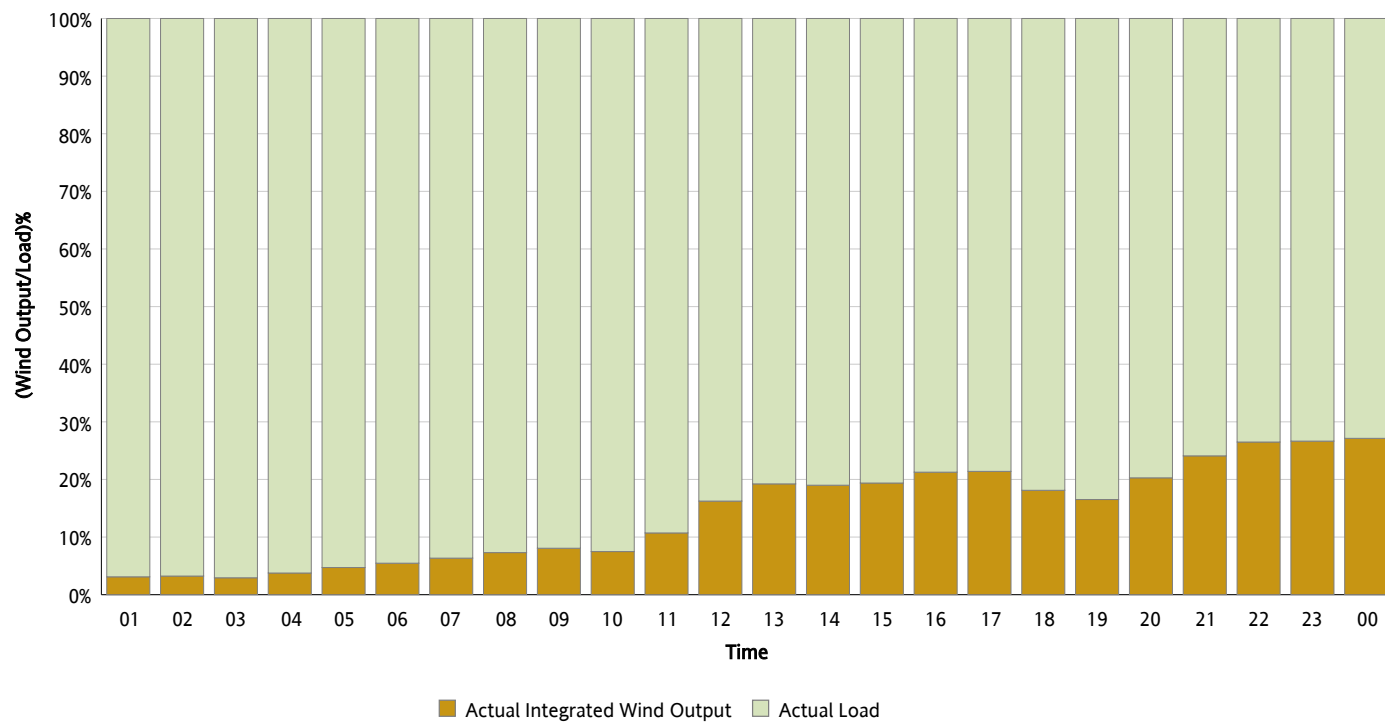
Actual Wind Output as a Percentage of the Total Installed Wind Capacity

02/03/2013



Actual Wind Output as a Percentage of the ERCOT Load

02/03/2013



ERCOT Load vs. Actual Wind Output

01/27/2013 - 02/03/2013

